



27 Albert Embankment, London  
SE1

GARTONJONES.COM



27 Albert Embankment, London  
, SE1

GARTON JONES.COM

9 Albert  
Embankment  
London  
SE1 7SP

Lettings:  
+44 (0) 20 7735 1888  
nineelms@gartonjones.com  
www.gartonjones.com

£725 Per Week

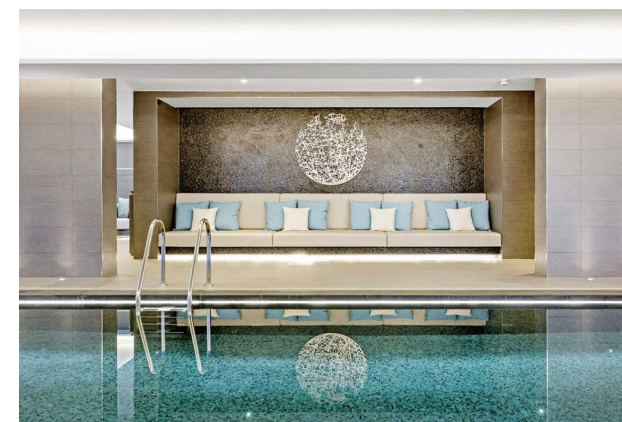
A spacious 1-bedroom apartment to rent of approx. 637sq.ft (59sq.m) within The Dumont, a landmark development by St James, located on the banks of the River Thames by Lambeth Bridge. This property benefits from an open plan reception room with fully fitted interior designed kitchen with integrated appliances, luxury bathroom suite, a utility cupboard and good storage.

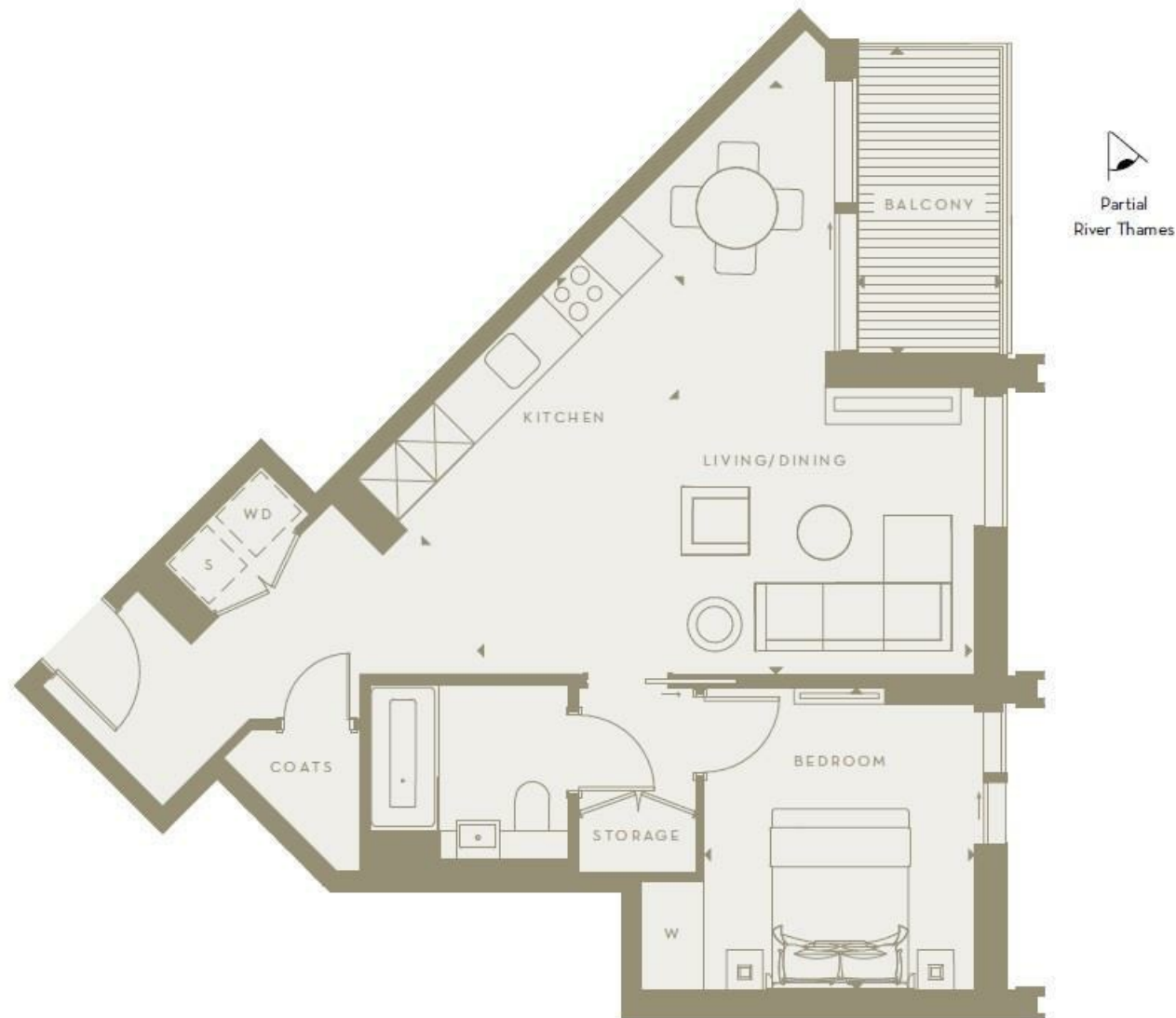
Residents of The Dumont benefit from exclusive access to a 19th floor Skyline Club Lounge within the Corniche, an extensive health and wellness suite offering spa treatments, a gymnasium with private training facilities and an indoor infinity pool plus a screening room, games room, billiards room and ten-pin bowling. Vauxhall Station is a short walk away offering the Victoria Line underground, Overground services, and bus links, all providing easy access into Central London.

Please note furniture may differ to that shown in the current photos.

- Electricity Supply — Mains | Water Supply — Mains | Sewerage — Mains | Heating — Comfort Cooling
- Broadband & Mobile Signal : Check Coverage via Ofcom
- Parking: No Parking
- Lift Access
- Building Safety: EWS1 Available on Request
- Council Tax Band G (London Borough of Lambeth)
- 5 Week Security Deposit
- Holding deposit equivalent to 1 week of rent
- Rent to be payable monthly in advance
- EPC Rating B (85)

- 1 Bedroom
- 637sq.ft (59sq.m)
- Bathroom
- Large Balcony
- Open Plan Reception
- Comfort Cooling
- 24 Hour Concierge
- Residents Gym
- Swimming Pool & Spa Facilities
- 0.4 Miles to Vauxhall





**Total Internal Area    59.15 m<sup>2</sup>    637 ft<sup>2</sup>**

